

**HUBBLE STUDIO™**

MORE THAN JUST A STUDIO



**“HUBBLE IS THE PORTAL THAT TAKES ARTISTRY TO THE MASSES.  
WE HAVE THE BALANCE OF AGILITY AND GRANULAR DETAIL TO  
EXECUTE ANY VISION NECESSARY.”**

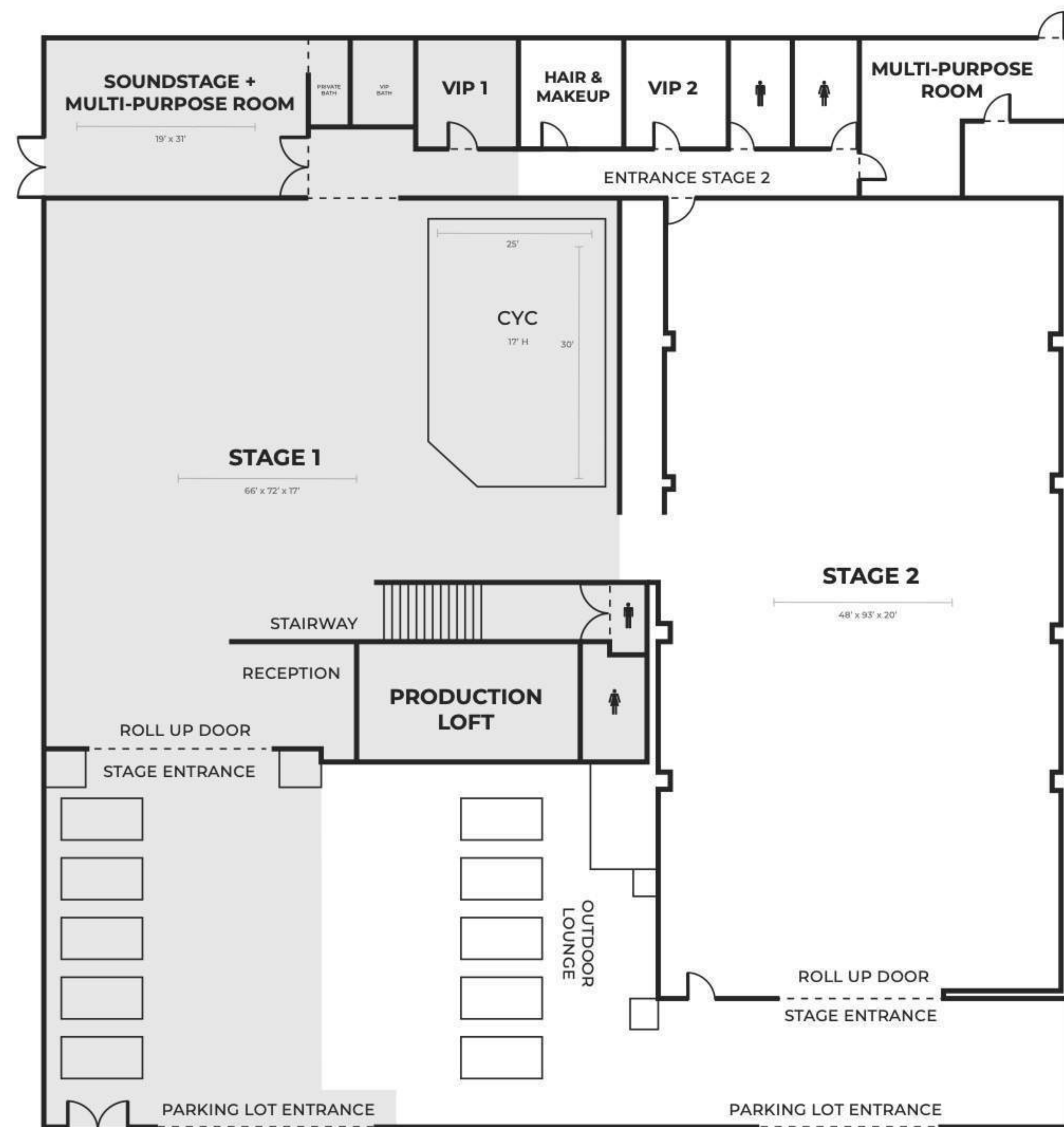
**- VINCE RICCI, FOUNDER -**

# FACILITY

ESTABLISHED IN 2014, HUBBLE STUDIO HAS GROWN FROM ONE 4,000 SQ. FT. STAGE, INTO A 40,000 SQ. FT. CREATIVE CAMPUS, WITHOUT EVER LOSING ITS BOUTIQUE FEEL. TODAY OUR 4 LUXURY PRODUCTION STAGES AND EQUIPMENT TEAM GIVES THE POWER AND FLEXIBILITY TO TAKE IDEAS FROM INCEPTION TO HIGH QUALITY FINISHED PRODUCT.

HUBBLE HAS BEEN HOME TO DOZENS OF CHARITY EVENTS, HUNDREDS OF EVENTS (IE. ALBUM RELEASE PARTIES, ENTERTAINMENT EVENTS, FASHION SHOWS AND PRODUCT LAUNCHES) AND THOUSANDS OF PRODUCTIONS WITH HIGH PROFILE CLIENTS.

# STAGE 1

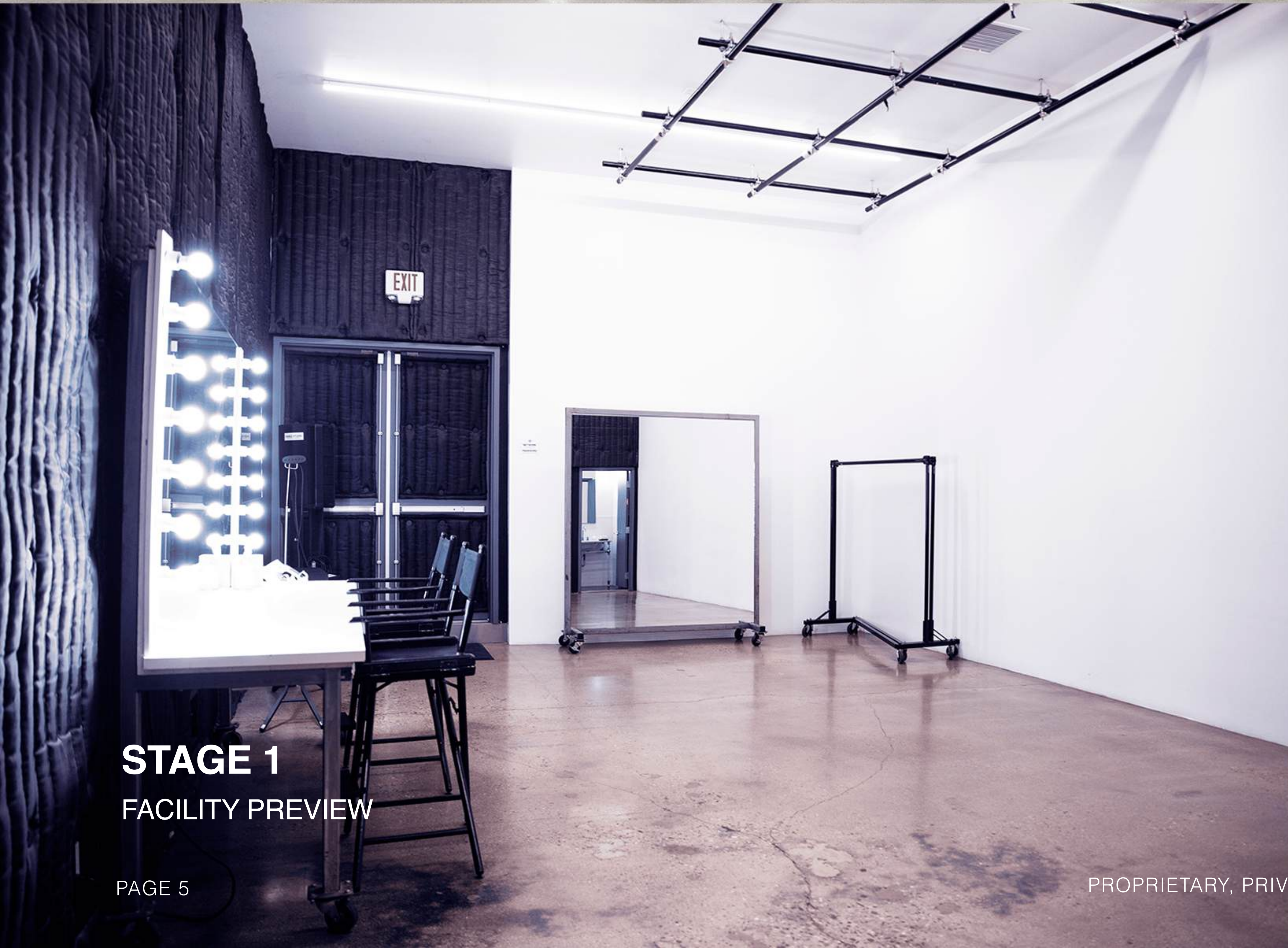
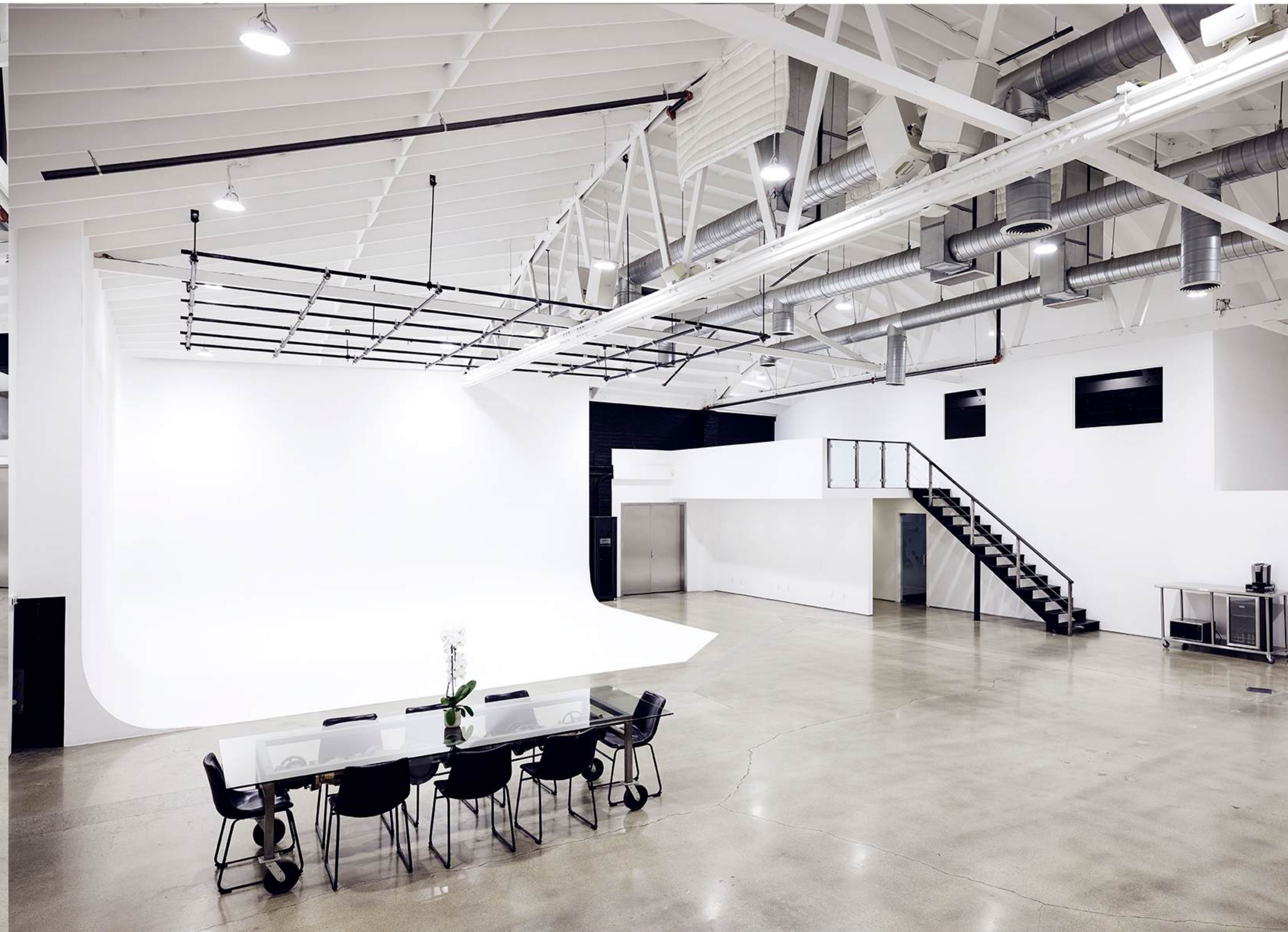
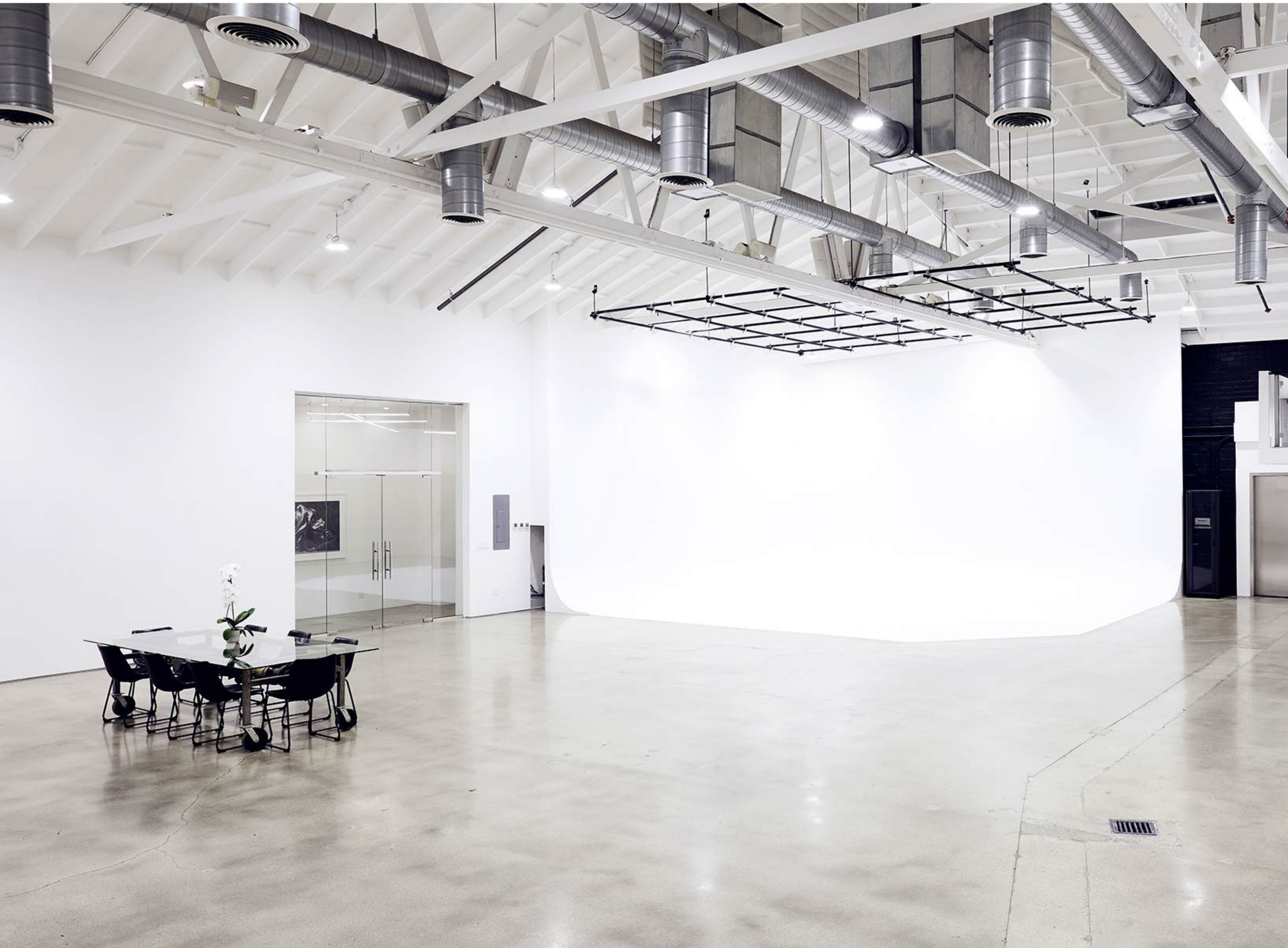


THIS 4,500+ SQ. FT. SPACE HAS POLISHED CONCRETE FLOORS, TWO SKYLIGHTS, AND A CYC. THERE IS A PRODUCTION LOFT AVAILABLE THAT OVERLOOKS THE ENTIRE STAGE. WITHIN THE SPACE, THE POWER RATING IS 600 AMPS. IN ADDITION, THERE ARE SURROUND SOUND BOSE MUSIC SPEAKERS. CLIENTS ARE ALSO WELCOME TO UTILIZE THE SMALL SOUNDSTAGE, WHICH IS LOCATED IN THE BACKSTAGE. THIS SOUNDSTAGE HAS A GRID, A TELEVISION AND A PRIVATE BATHROOM. THERE'S A CUSTOM-DESIGNED VIP ROOMS, WHICH IS EQUIPPED WITH A SMALL FRIDGE AND A TELEVISION. CLIENTS ARE WELCOME TO UTILIZE ON-SITE PARKING AS WELL AS OUR OUTSIDE PATIO SPACE.

**SIZE:** 4,500+ SQ FT  
**POWER:** 600 AMPS  
**CYC:** 25' x 30', 17' H  
**FLOOR:** POLISHED CONCRETE  
**CEILING:** 17' TO GRID, 23' TO CEILING

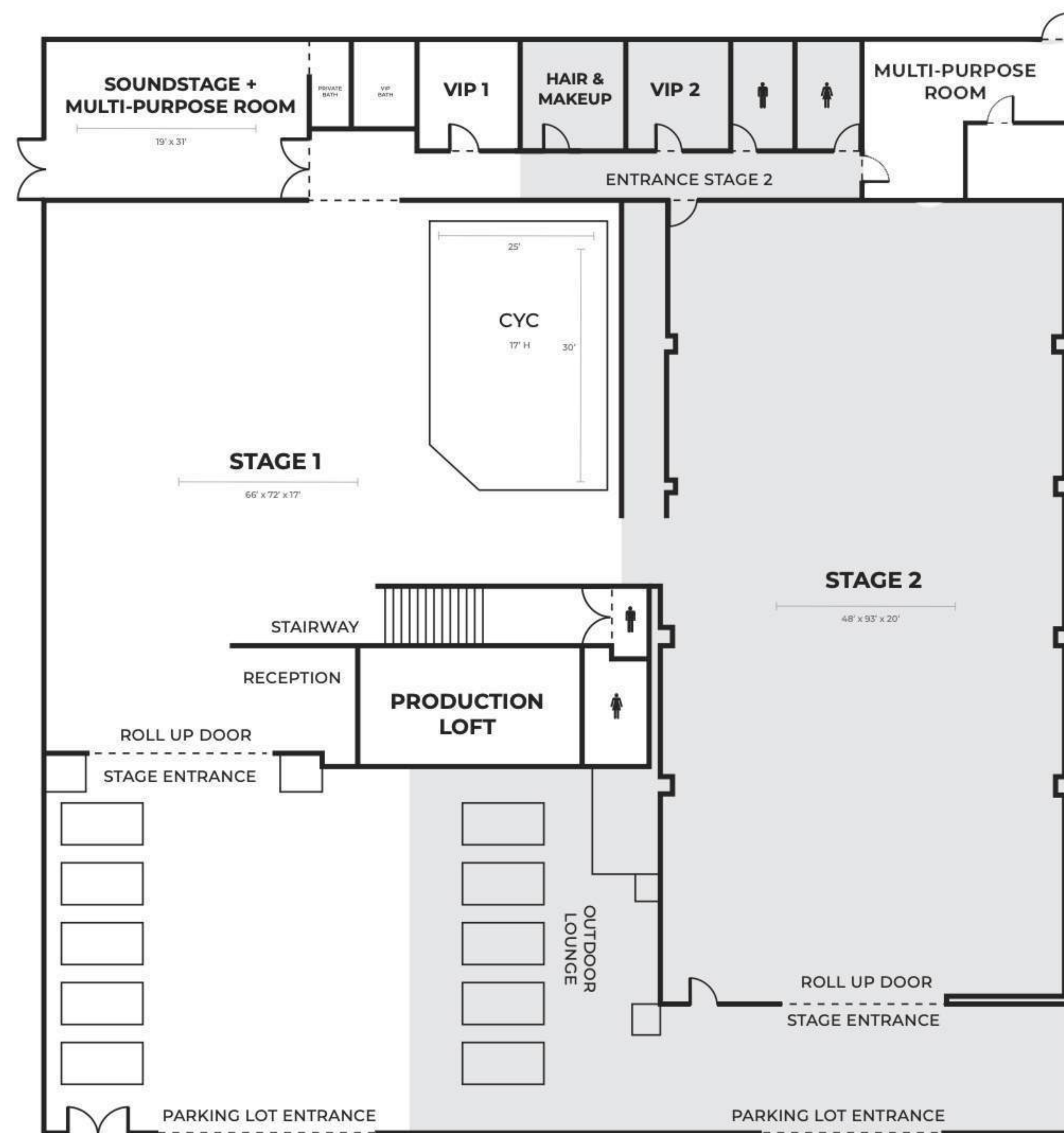
**INCLUDED:**

2X STEEL ROLLING TABLE	1X TABLE
1X MINI FRIDGE	6X OFFICE CHAIRS
1X MICROWAVE	1X IRON
2X Z-RACKS	1X IRONING BOARD
1X STEAMER	1X ROLLING VANITY TABLE
1X SPEAKER	2X TALL DIRECTOR'S CHAIRS
1X SEATING AREA	



**STAGE 1**  
FACILITY PREVIEW

# STAGE 2



THIS 5,000+ SQ. FT. SPACE, OUR LARGE SOUND-TREATED STUDIO, HAS POLISHED CONCRETE FLOORS. WITHIN THE SPACE, THE POWER RATING IS 600 AMPS WITH 3-PHASE CAPABILITIES. THIS STUDIO HAS A GRID, A VIP GREEN ROOM WITH A SMALL FRIDGE AND A TELEVISION. THERE IS A MAKEUP & HAIR ROOM WITH THREE BUILT-IN GLAMOUR STATIONS, LIGHTS AND A CLOTHING RACK. ON-SITE PARKING AVAILABLE.

**SIZE:** 4,500+ SQ FT  
**POWER:** 1,200 AMPS  
**FLOOR:** POLISHED CONCRETE  
**CEILING:** 17' TO GRID, 23' TO CEILING

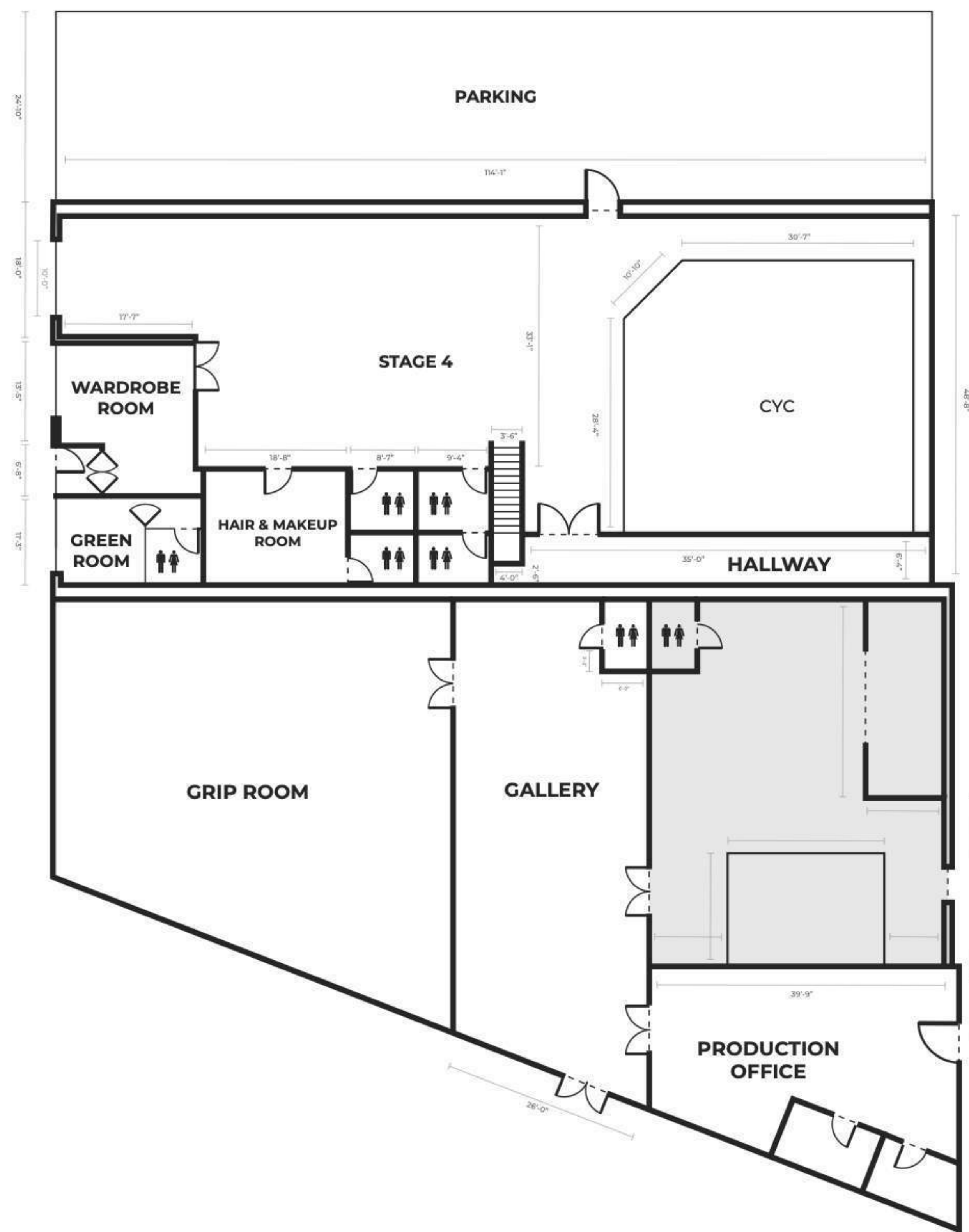
**INCLUDED:**

2X STEEL ROLLING TABLE	1X TABLE
1X MINI FRIDGE	6X OFFICE CHAIRS
1X MICROWAVE	1X IRON
2X Z-RACKS	1X IRONING BOARD
1X STEAMER	1X ROLLING VANITY TABLE
1X SPEAKER	2X TALL DIRECTOR'S CHAIRS
1X SEATING AREA	



STAGE 2  
FACILITY PREVIEW

# STAGE 3



THIS 2,000+ SQ. FT. SPACE HAS POLISHED CONCRETE FLOORS, TWO SKYLIGHTS, AND A CYC. WITHIN THE SPACE, THE POWER RATING IS 200 AMPS. IN ADDITION, THERE ARE MOBILE BOSE MUSIC SPEAKERS.

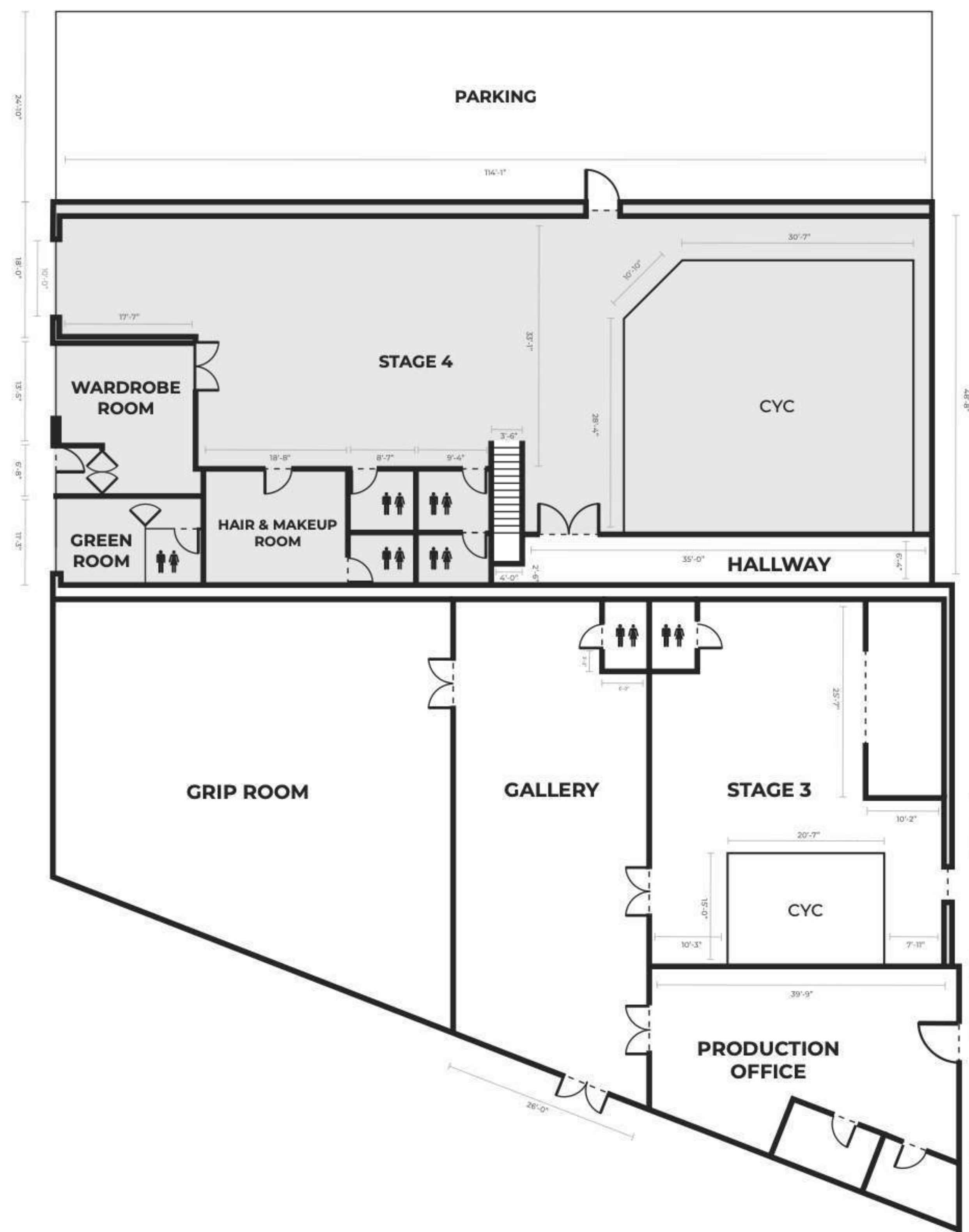
**SIZE:** 2,000+ SQ FT  
**POWER:** 200 AMPS  
**CYC:** 20'7" x 15' x 12' H  
**FLOOR:** POLISHED CONCRETE  
**CEILING:** 12'6"

- INCLUDED:**
- |                        |                           |
|------------------------|---------------------------|
| 1X STEEL ROLLING TABLE | 1X TABLE                  |
| 1X MINI FRIDGE         | 6X OFFICE CHAIRS          |
| 1X MICROWAVE           | 1X IRON                   |
| 2X Z-RACKS             | 1X IRONING BOARD          |
| 1X STEAMER             | 1X ROLLING VANITY TABLE   |
| 1X SPEAKER             | 2X TALL DIRECTOR'S CHAIRS |
| 1X SEATING AREA        |                           |



STAGE 3  
FACILITY PREVIEW

# STAGE 4



OUR LARGEST STUDIO AT 5,200 SQ FT FEATURES A LARGE 2-WALL WHITE CYCLORAMA, CLIENT AREA, CONFERENCE TABLE FOR MEETINGS AND A BOSE SPEAKER SYSTEM. IT IS THE PERFECT SPACE FOR MULTIPLE SETS AND FEATURES FANTASTIC SUPPORT ROOMS AND PRIVATE RESTROOMS FOR CLIENTS. THIS STAGE ALSO HAS A PRIVATE PARKING AREA THAT FITS TEN CARS AND DOUBLES AS AN OUTDOOR SHOOTING SPACE. THIS IS THE IDEAL STAGE FOR LARGE PRODUCTIONS AND CREWS.

**SIZE:** 5,200+ SQ FT  
**POWER:** 600 AMPS  
**CYC:** 28'4" x 10'10" x 30'7"  
**FLOOR:** POLISHED CONCRETE  
**CEILING:** 20' I, TO I-BEAMS: 15'6"

**INCLUDED:**

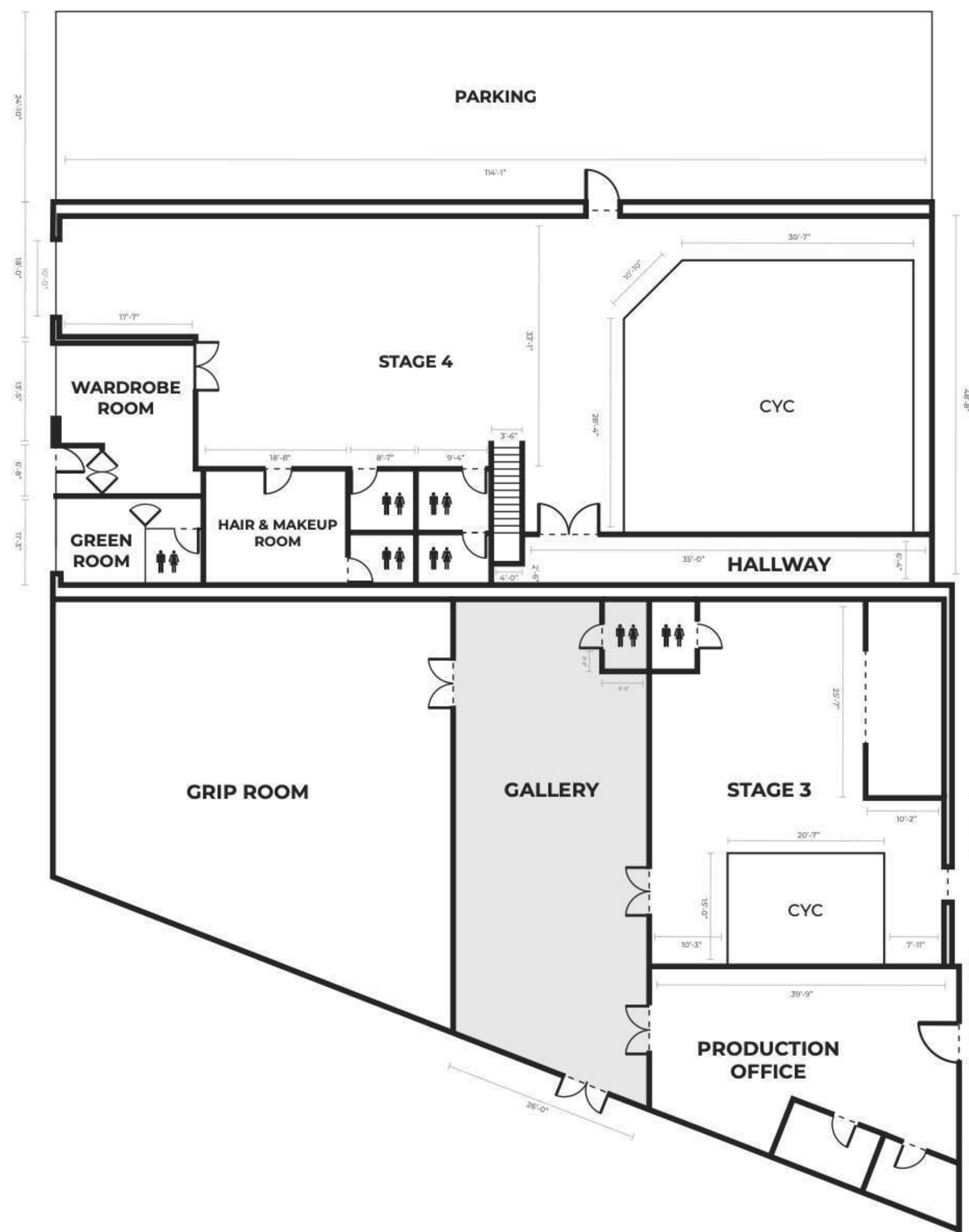
2X STEEL ROLLING TABLE	1X TABLE
1X MINI FRIDGE	6X OFFICE CHAIRS
1X MICROWAVE	1X IRON
2X Z-RACKS	1X IRONING BOARD
1X STEAMER	1X ROLLING VANITY TABLE
1X SPEAKER	2X TALL DIRECTOR'S CHAIRS
1X SEATING AREA	



**STAGE 4**  
FACILITY PREVIEW

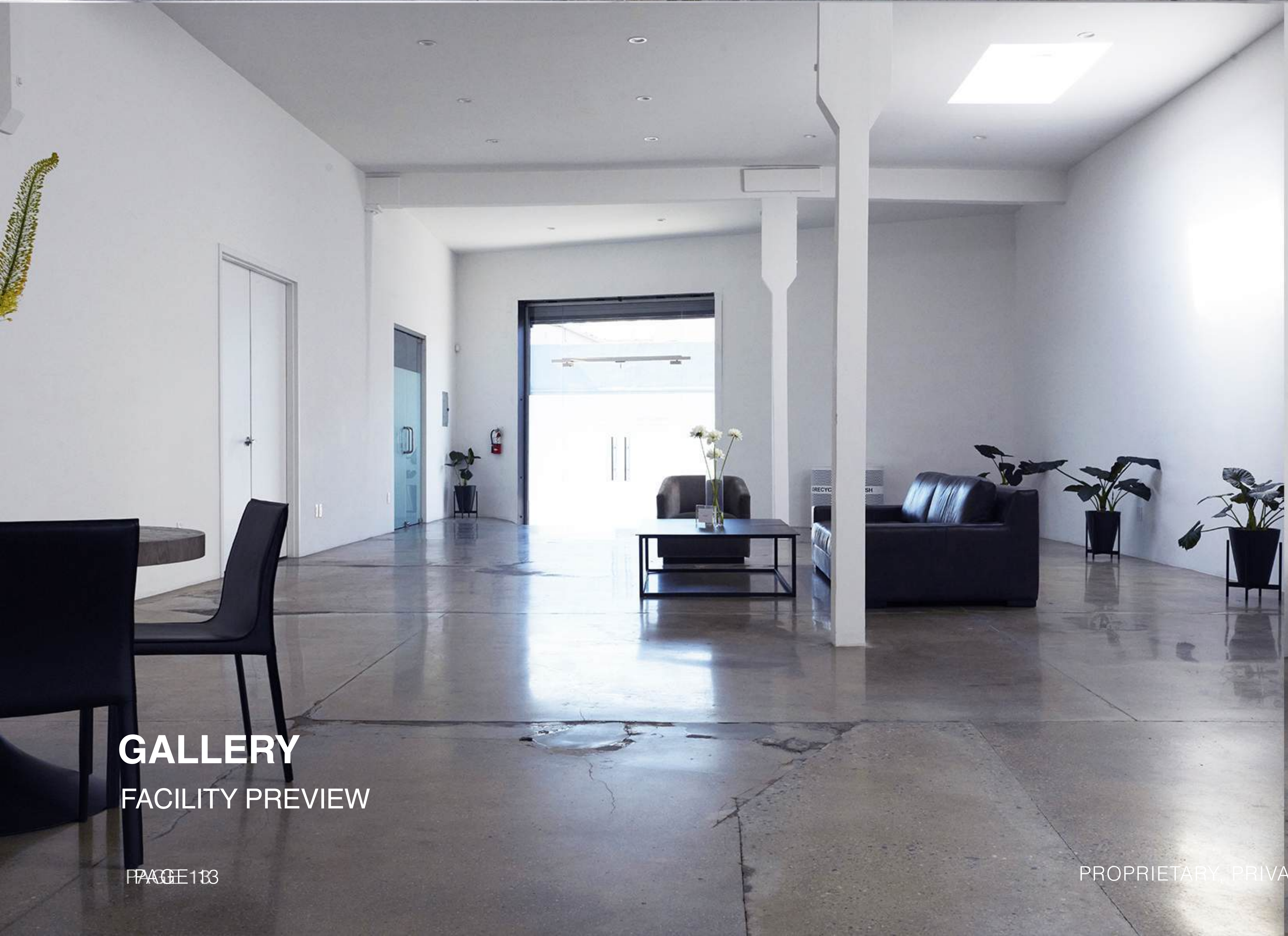


# GALLERY



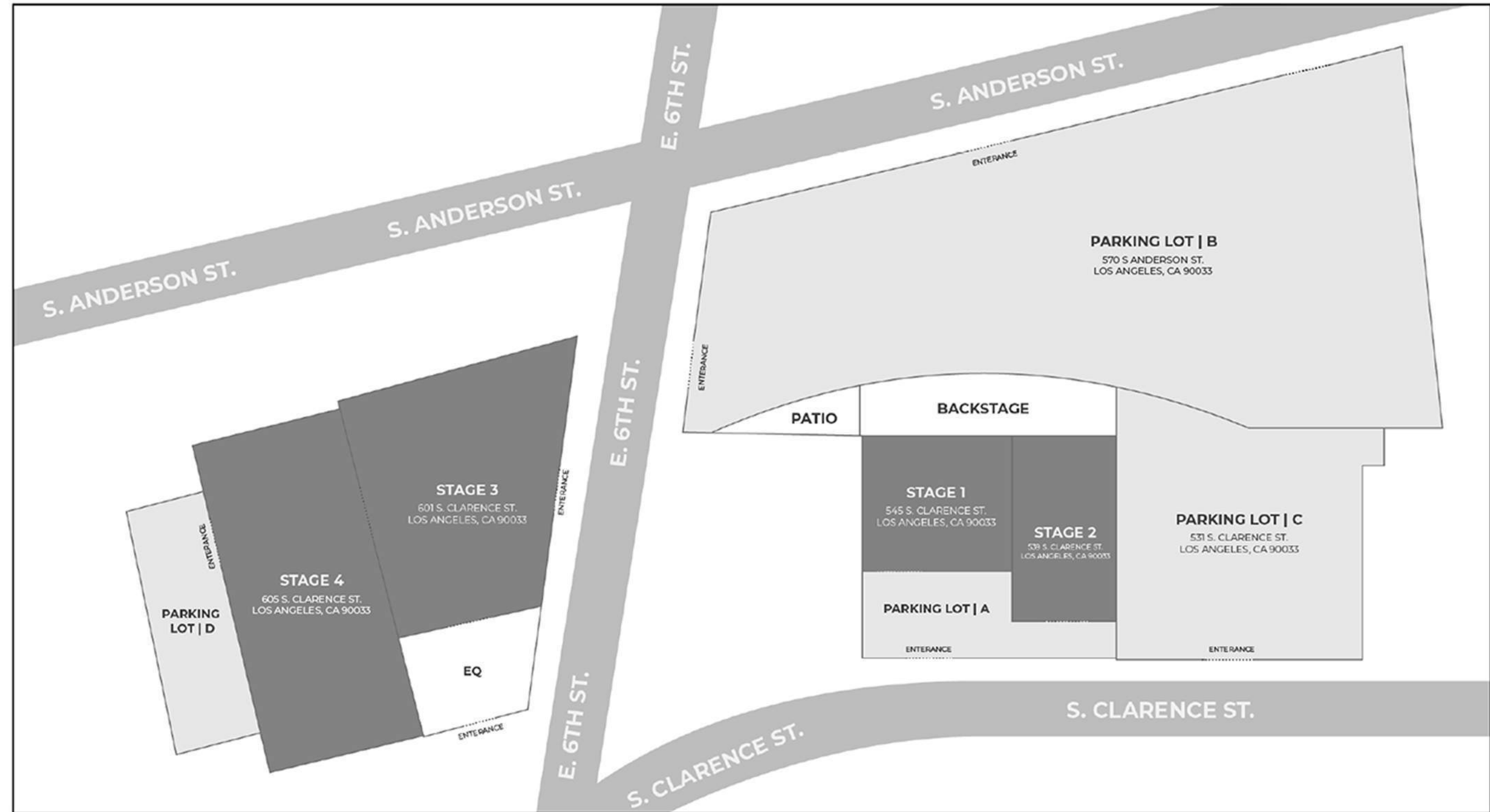
THE GALLERY, WHICH ALSO SERVES AS A LOBBY, BETWEEN STAGES 3 AND 4, IS A GREAT INTIMATE SPACE. IT IS IDEAL TO USE FOR CATERING FOR CREWS, A CLIENT LOUNGE OR AN ART SHOWCASE. THE GALLERY HAS POLISHED CONCRETE FLOORS AND RECEIVES BEAUTIFUL NATURAL LIGHT.

**KEY INFO:** 1,486+ SQ.FT.



GALLERY  
FACILITY PREVIEW

545 S. Clarence St. Los Angeles, CA 90033 | **T** 323.263.3418 | **W** hubblestudio.com | **E** book@hubblestudio.com | **IG** @hubblestudio



**ADDRESSES**  
 Stage 1: 545 S. Clarence St.  
 Stage 2: 539 S. Clarence St.  
 Stage 3: 601 S. Clarence St.  
 Stage 4: 605 S. Clarence St.

**PARKING LOTS**  
 Stage 1: Left side of Lot A  
 Stage 2: Right side of Lot A  
 Stage 3: Street Parking  
 Stage 4: All of Lot D (9 Spots)  
 Lot B & C: Upon Request

**FROM THE WESTSIDE:**

- Take CA-90 in Los Angeles from S Centinela Ave  
6 min (1.7 mi)
- Take I-10 E in Los Angeles from La Cienega Blvd  
13 min (4.7 mi)
- Follow I-10 E to S Boyle Ave. Take exit 17 from I-10 E  
11 min (8.9 mi)
- Take E 7th St and S Anderson St to S Clarence St

**FROM EAST LOS ANGELES**

- Take CA-60 W from Whittier Blvd and S Downey Rd  
5 min (1.8 mi)
- Continue on CA-60 W to Los Angeles. Take exit 1A from US-101 N  
3 min (2.9 mi)
- Drive to S Clarence St  
3 min (2.9 mi)

**FROM HOLLYWOOD:**

- Take US-101 S/Hollywood Fwy  
7 min (1.5 mi)
- Follow US-101 S to E 4th St. Take exit 1B from US-101 S  
14 min (6.1 mi)
- Drive to S Clarence St

**NEAREST HOSPITAL:**  
 WHITE MEMORIAN MEDICAL CENTER  
 1720 E Cesar Chavez Ave  
 Los Angeles, CA 90033